



Section 1: Installing the TrackRanger GPS with Windows 2000 / Windows XP / ME

Important:

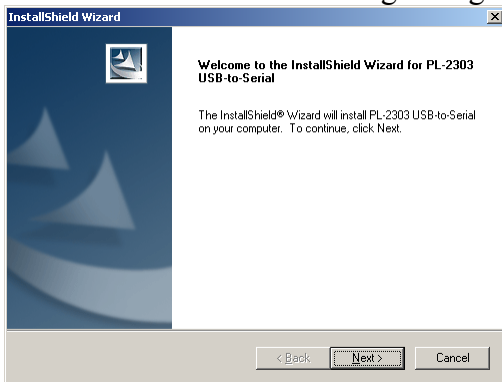
DO NOT PLUG THE TRACKRANGER GPS INTO THE COMPUTER YET.

Insert the GPS CD into your CD-ROM drive. You should see the following dialog:



Press the install driver button.

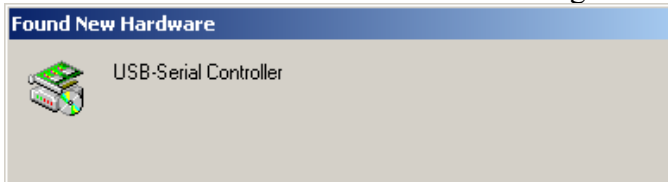
You will receive the following dialog



Follow the prompts. Once the driver is installed, press Finish

Now plug the TrackRanger GPS into an unused USB port. Always use this port in future.

You will see a Found New Hardware Message



Follow the prompts, using defaults for all input.

Once the device is installed, press Finish/Close if requested.

Reboot the computer if this is recommended.

Section 2: TrackRanger Communications:

TrackRanger must now be set to use the same COM port as has been installed from the new driver:

Right-click on "My Computer" and select Manage.
(Alternatively, Select the Windows Control Panel | Administrative Tools | Device Manager from the Windows Start button)

Click on Device Manager

Navigate to and expand the section on Ports

Identify the COM port number as shown above that relates to the Prolific USB-To-Serial Comm Port device (in this case COM3)

Set TrackRanger to the same COM port as found above, and press the Save button

GPS Comms	Sat location	Signal
BaudRate	Com Port	Parity
<input type="radio"/> 300	<input type="radio"/> 01 <input type="radio"/> 07	<input type="radio"/> Even
<input type="radio"/> 600	<input type="radio"/> 02 <input type="radio"/> 08	<input type="radio"/> Mark
<input type="radio"/> 1200	<input type="radio"/> 03 <input type="radio"/> 09	<input checked="" type="radio"/> None
<input type="radio"/> 2400	<input type="radio"/> 04 <input type="radio"/> 10	<input type="radio"/> Odd
<input checked="" type="radio"/> 4800	<input type="radio"/> 05 <input type="radio"/> 11	<input type="radio"/> Space
<input type="radio"/> 9600	<input type="radio"/> 06 <input type="radio"/> 12	
<input type="radio"/> 19,200		
Save	Stop Bits	Data Bits
Help	<input checked="" type="radio"/> 1 <input type="radio"/> 2	<input type="radio"/> 7 <input checked="" type="radio"/> 8

Start TrackRanger, Select the Satellites page (Hot-Key S), Click the GPS Comms tab, and set the Com port number to match the one shown above, press the Save button.

You are now ready to 'L'ink to the GPS