

TrackRanger-Pro V5 New Features

Track-Plan:

- Allows a Track Trace to be created with the mouse in conjunction with the Shift key. Feature is turned on/off with Control-T. TrackPlan saves the TrackTrace data to disk when the second Control-T is pressed (see figure 1).



Figure 1 - Manually create a Track Trace file with the mouse.

- Added ability to erase the last Track Plan (when recording a track trace with the mouse), by pressing Control-U

Distance to Waypoints

- TrackRanger dynamically shows the user the distance remaining (in Metres) when approaching a WayPoint (if Alert when approaching Waypoints is turned on). – see figure 2

Approaching Wpt: 'LAGOON' (428Metres) TORGANNAH LAGOON ON LEFT-

Figure 2 - Distance to Way Point is shown on alert message

- Current Date and Time is shown on bottom of the Travel Statistics page if it is visible.

Time To Dest'n: 03:35:11

Close

25-Dec-2005 6:49:46 AM

Printing Trip Plans:

- Added ability to print Distance Route, complete with WayPoints in use, Lat/Long, Accumulative Distance, and comments

Press the print button from the Distances to Waypoints page. - see figure 3

TrackRanger Travel Route Summary: AAAToCumwalToMelbourne_52WPs.WPT

Waypoint	Latitude	Longitude	Est. Dist	Comment
START	035°48'44"	145°33'28"	0.0	START OF TRIP
LEFTBEND	035°49'31"	145°33' 1"	1.635km	STAY SOUTH
WASH CK	035°49'52"	145°33'35"	2.759km	WASH CREEK BRIDGE
BRIDGE	035°51'30"	145°33'35"	5.8km	VEER LEFT
TORGANAH	035°51'53"	145°34' 6"	6.9km	TORGANNAH LAGOON STAY SOUTH
WP003B	035°52'27"	145°34'12"	8.0km	HEAD SOUTH
LAGOON	035°52'53"	145°34'26"	8.9km	TORGANNAH LAGOON ON LEFT
KOONOMO	035°53'56"	145°34'29"	10.8km	KOONOOMOO TURN OFF STAY SOUTH
COBRAMTO	035°55'19"	145°35'23"	13.8km	TURN RIGHT
WP006	035°55'28"	145°25'51"	29.2km	TURN LEFT
KATAMIT	036°17'60"	145°25'48"	71.3km	KATAMATITE-SHEPPARTON VEER RIGHT
BARMAHRD	036°20' 2"	145°24'10"	76.0km	BARMAH - SHEPPARTON RD, VEER LEFT
MIDLAND	036°22'46"	145°23'57"	81.1km	MIDLAND INTERSECTION, HEAD SOUTH
AIRPORT	036°25'45"	145°23'14"	86.8km	SHEP. A/PRT, STAY HEADING SOUTH
TOOLAMBA	036°29'45"	145°23'23"	94.3km	TOOLAMBAH CROSSROAD, STAY SOUTH
PRANJIP	036°36'42"	145°19' 7"	109.0km	PRANJIP CREEK

Figure 3 - Print a travel route summary

Printing a Trip Travel Route (Distances Page) shows both iterative and incremental distances.

Time and date added to waypoint comment field

Auto Add waypoint ('=' key) now adds the time as well as the date to the comment field of the waypoint.

Recording a GPS log file (Control-R):

When recording a GPS log file, GPS position arrow flashes with bold Red border.

When recording paused, Arrows flashes with bold Green border. Otherwise, arrow flashes with normal Blue border.

GPS recording log file size increased from 2.5Mb to 25Mb (approximately 20 hours continuous recording).

Increased Maximum TrackTrace size - now 32 times larger. To handle large TT files

New hotkey X7

Included X7 magnification for small in-car video screens (hotkey 'X7')

New distance measurement feature:

Measure Distance from origin point accumulates a distance until the right mouse button is clicked – see figure 4

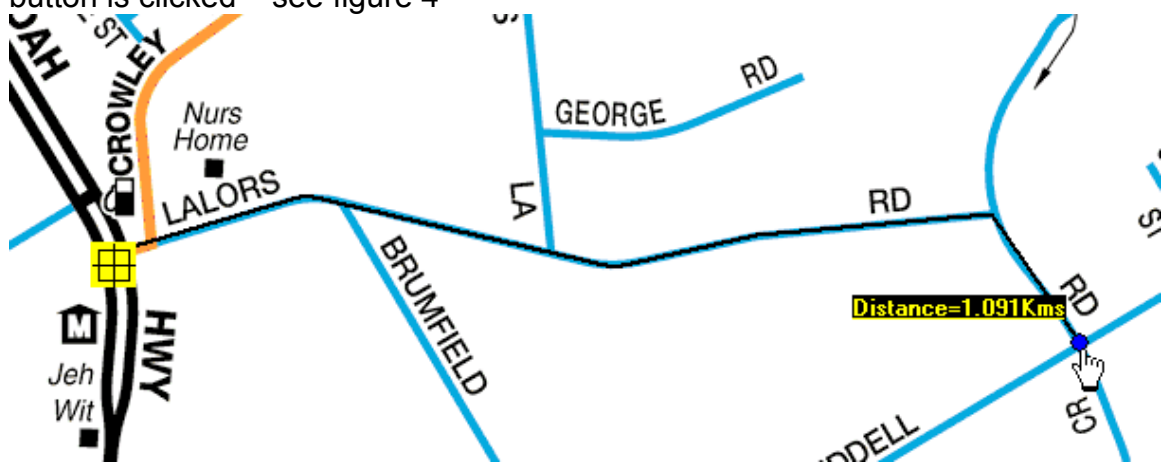
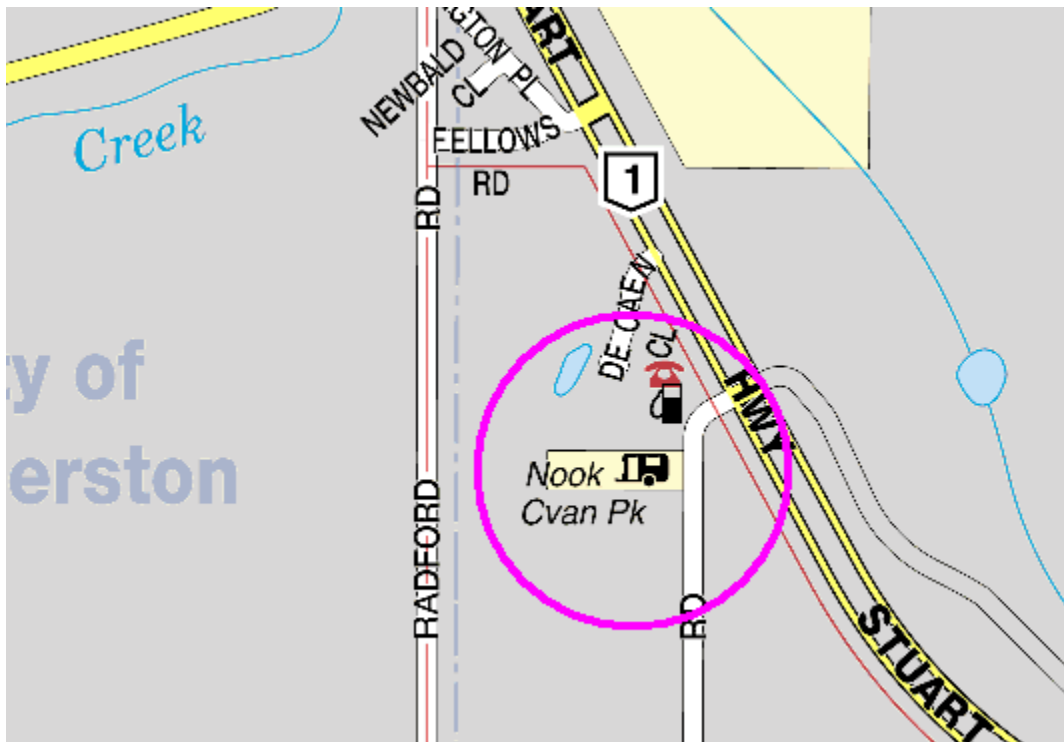
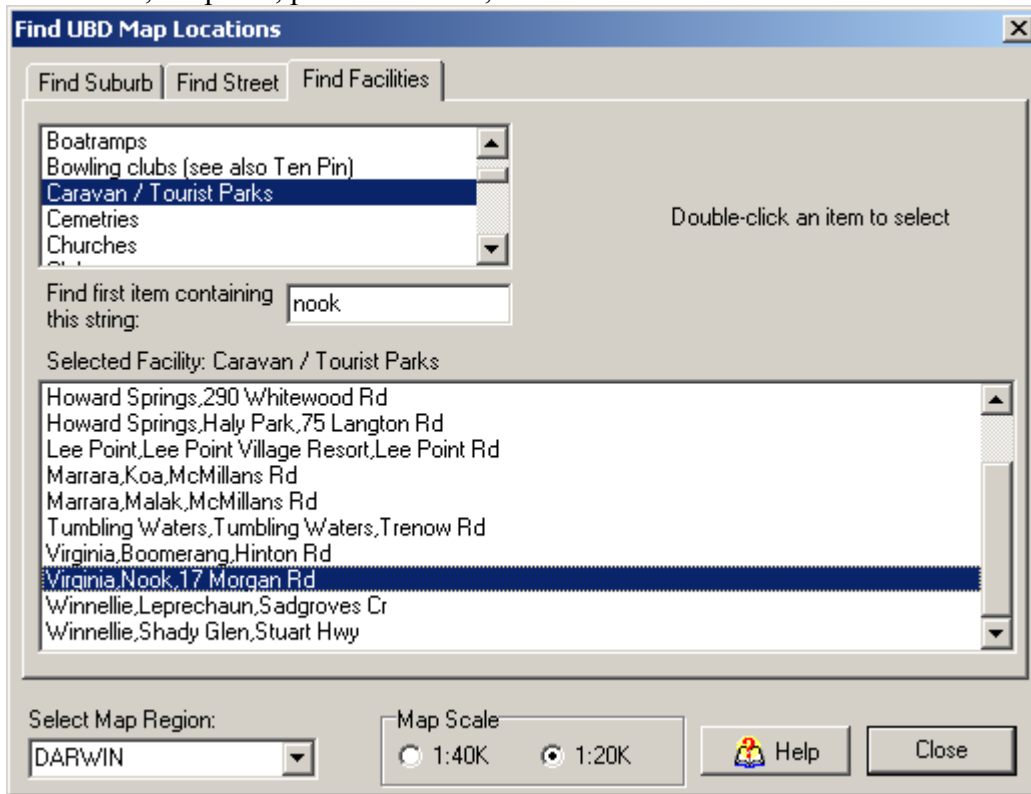


Figure 4 - Distance measurement over multiple segments

UBD:

Included full UBD map support

Support is available for searching for facilities such as caravan parks, police stations, ambulance, hospitals, post offices etc, etc:



Search for a street:

Find UBD Map Locations [X]

Find Suburb | **Find Street** | Find Facilities

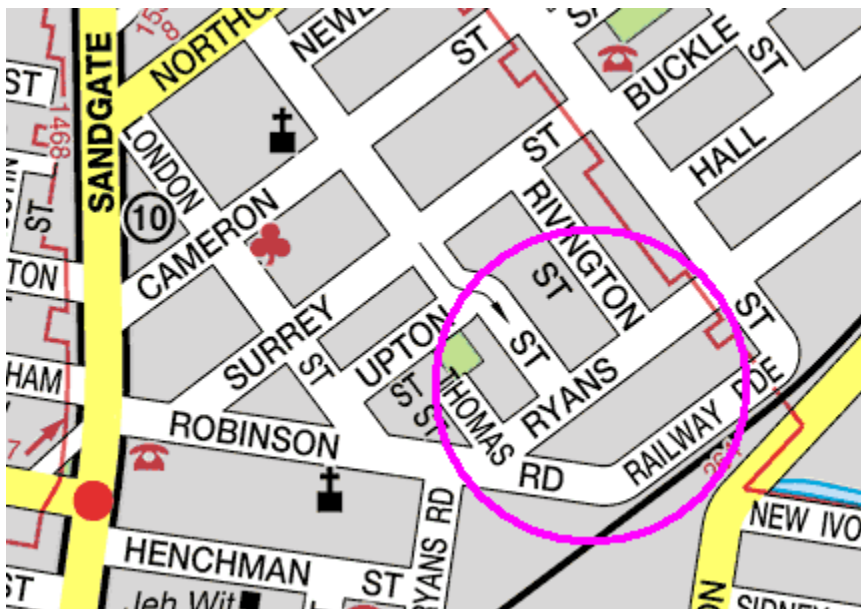
Enter Street letters:
ryan To load map, double-click on a street from the list below:

- Ryan Av BALMORAL
- Ryan Av BALMORAL
- Ryan Ct BRAY PARK
- Ryan Ct BURPENGARY
- Ryan Ct RIVERVIEW
- Ryan Ct VICTORIA POINT
- Ryan Pl ORMEAU
- Ryan St GLASS HOUSE MOUNTAINS
- Ryan St GOODNA
- Ryan St LDGANLEA
- Ryan St WEST END
- Ryan St WEST END
- Ryans Rd NORTHGATE**
- Ryans Rd NUNDAH
- Ryans Rd NUNDAH
- Ryans Rd ST LUCIA
- Ryans Rd TALLEBUDGERA VALLEY

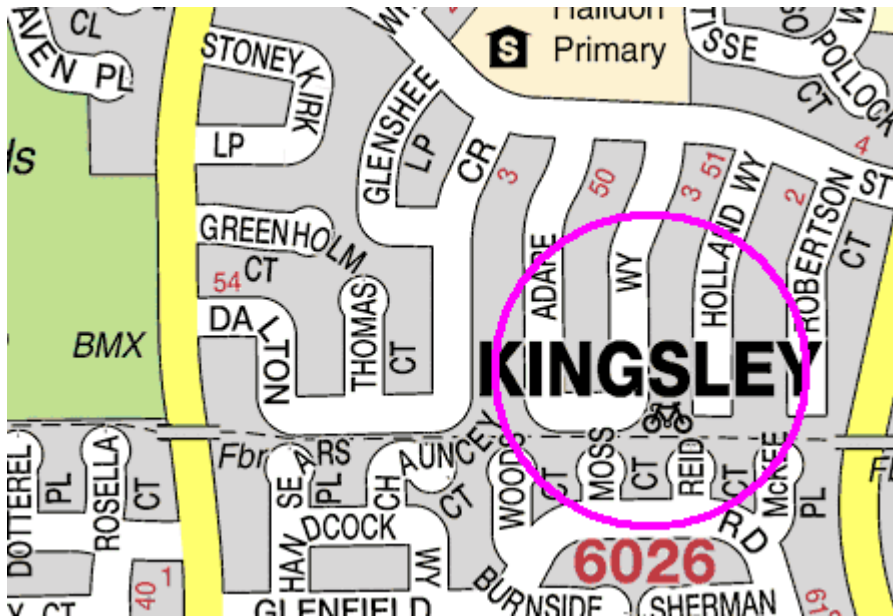
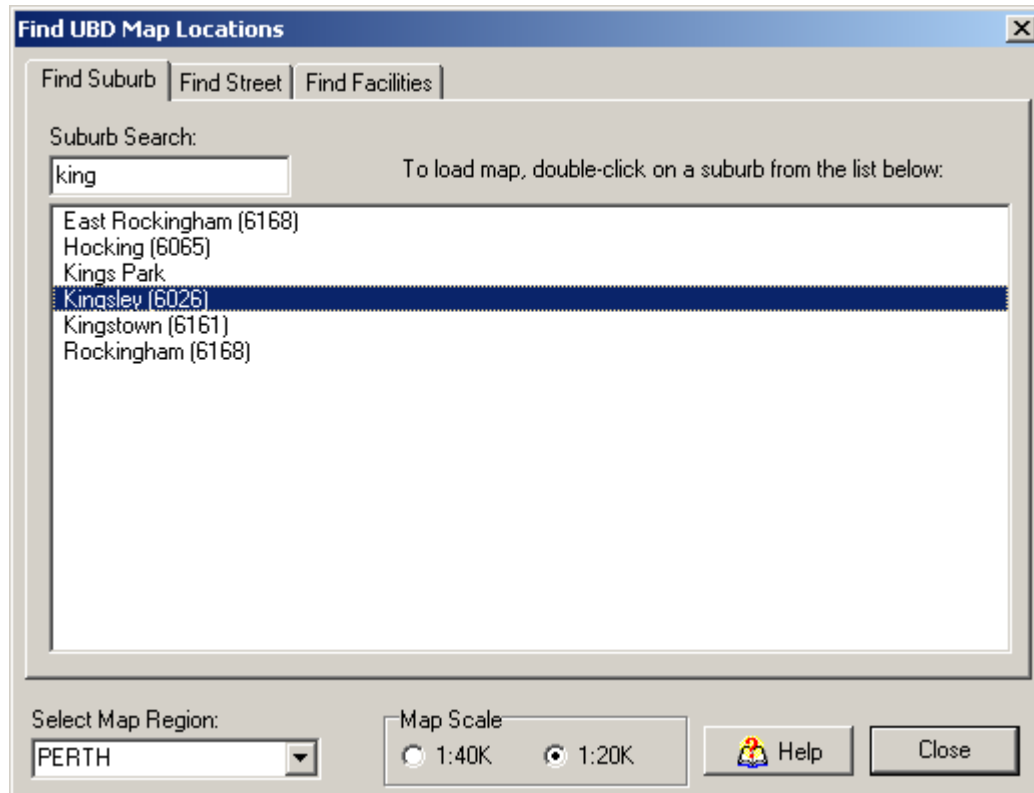
Select Map Region: BRISBANE+Coasts

Map Scale: 1:40K 1:20K

Help



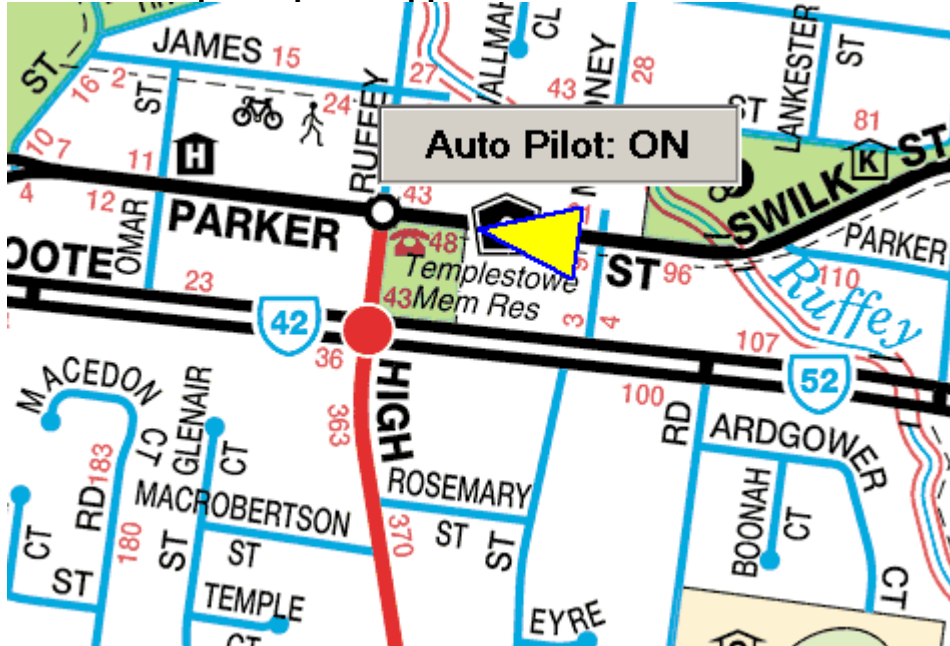
Search for a suburb



When running Autopilot, TrackRanger automatically uses UBD map if in range, otherwise NatMap maps.

Added 'FN' hotkeys (toggle Force Natmap) - F hotkey no longer toggles the Full screen function. This has been replaced by FN.

Full UBD map autopilot support:



Max Speed indicator

Added maximum recorded trip speed to Trip Statistics Display (reset from Distance to WP's form (reset button) – see figure 5



Figure 5 - Maximum trip speed is shown on Travel Statistics page