

TrackRanger-PRO
GPS Navigation System
Version Pro-7



**Installation Instructions
and
Quick Start Guide**



TrackRanger is a comprehensive dynamic navigation system. For best results, the new user should become familiar with this quick start guide before using TrackRanger.

Installing TrackRanger

Insert the TrackRanger CDROM into the Notebook PC

The Installation program should automatically launch. If Auto Insert Notification is disabled for the computer, you will need to manually launch SETUP.EXE on the CDROM. Do this by navigating to the CDROM drive from My Computer or Windows Explorer, and double click on the file SETUP.EXE.

It is recommended that all of the TrackRanger Installation “default settings” be followed.

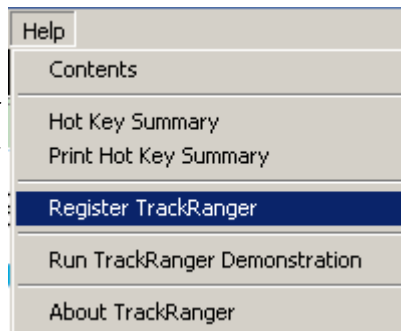
Setup will create the necessary directories; copy all of required files, including the demonstration maps, establish the necessary desktop and start menu items shortcuts and optionally allow the user to install Acrobat Reader.

Acrobat Reader is required to view the online manual and other associated documents. Most systems have Adobe already installed. Adobe PDF reader is available from: <http://www.adobe.com/products/>

Please note:

TrackRanger comes with a single user licence. As part of the installation, this licence will be installed as a serial number onto the user's computer. This should be the computer (i.e. Notebook/Laptop) on which TrackRanger will be used in the field

To find the serial number, start TrackRanger, the licence is the Serial Number found under the TrackRanger > Help drop-down menu > Register TrackRanger.

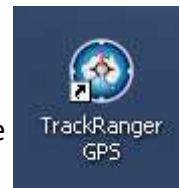


The user will be prompted to forward this serial number to Advantech Design for registration processing.

*TrackRanger may be installed on multiple computer systems, and most functionality will work on these other computer systems. **Please only request a registration for the computer that you will use TrackRanger with in the field.** (See page 22 for more information).*

TrackRanger operation overview

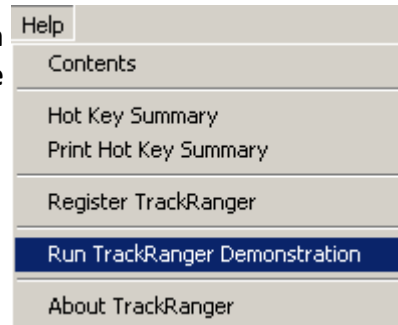
Start TrackRanger from the Start | Programs | TrackRanger menu, or by double clicking on the TrackRanger icon on the desktop.



Sample GPS Data:

TrackRanger has an embedded sample GPS data file that allows a user to become familiar with TrackRanger's powerful features without requiring the user to actively navigate. TrackRanger includes a demonstration facility, allowing the user to quickly view some of TrackRanger's powerful navigation features.

Start TrackRanger. Select Run TrackRanger Demonstration from the help drop-down menu:



Follow the prompts, and TrackRanger will automatically load maps, Waypoints etc, and start navigating for you using it's internal navigation features. This includes On-screen messages and Voice prompts

Alternatively, you may manually connect (Link) to the demonstration GPS data, and load a map by following these steps:

Step 1: With TrackRanger running, press the Escape <Esc> key on the keyboard. Click Yes to link to the GPS demo data. TrackRanger now works as though it were actually connected to a real GPS unit, allowing all of the functionality. Note: When TrackRanger is connected to a live GPS unit, press the L (Link/Listen to GPS) key instead.

Step 2: Press the 'M' key. TrackRanger will search for maps that match the GPS position. Use the down/up arrow keys to navigate to the map named:

TrackRangerSampleMap_HighRes.jpg from the list, and then press enter to load the map.

Step 3: Where the actual map size is larger than the computer screen, Auto-Map-Move is the most suitable. To start this function, press the 'A' and then the 'M' keys on the keyboard. Notice that the map moves in the background while the current GPS position tends to remain 'towards' the centre of the map display screen.

Step 4: Experiment with Hot-Keys:

Press the G key to toggle the GPS data display

Press the C key to toggle the Compass display

Press the S key to toggle the Speedometer display

Press the D key to toggle the Distances to Waypoints display

Press the R key to toggle the Scale Ruler display

If Waypoints are loaded, press the space bar to show / hide the marker and Waypoint names. See also the section on Waypoint Management Functions (page 23), and in the online help.

For best results, Advantech Design recommends you do the following:

- Copy Natmap Digital maps (if purchased) to the Hard Disk Drive (see page 10 of this guide).
- After copying Digital Maps, select “Update Database for all recommended maps” from the Utilities drop-down menu.
- Check “Load next ECW Map before Boundary Reached” from the Utilities drop-down menu (the default option).
- Install the UBD maps (if purchased) using all default settings, including allowing the install program to copy maps to hard drive.
- Set the GPS Com Port to match the Com port used by the GPS Receiver on your laptop (Control-S or View > GPS Satellite data) see Pg 21.
- Make sure your GPS Interface is set to NMEA (see page 21) (Not required for the TrackRanger GPS).

For normal operation, the easiest way to use TrackRanger is to Press L to Link to the GPS, then press AP to start Auto-Pilot—In Auto Pilot, TrackRanger finds the best map available for your current position)

Note: The AM key combination will toggle the state of the Auto-Map-Move function.

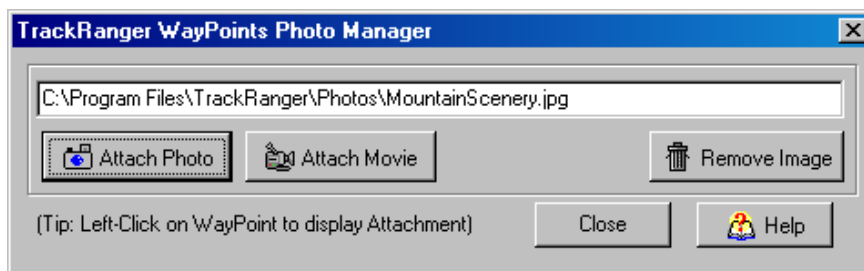
The Z key can be pressed at any time to zoom out to normal size (100% magnification), or to refresh the screen.

Adding a Photo Image or Video Clip to a Waypoint Position

(See further information on Waypoints on page 23)

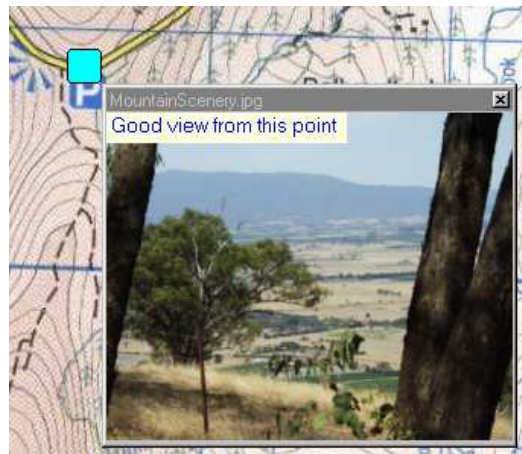
It is possible to add a photograph or Video Clip to a Waypoint Position. This is a useful way to keep track of locations, fishing spots, camping area, or other points of interest. The image can be either JPG or BMP format, or MPG video clip.

Add the Waypoint to the map (right click on map at desired position, or press the keyboard + key to instantly add a Waypoint at the current GPS position—Valid GPS data must be received), and



Showing the Photo Image on the map

Simply move the mouse over any Waypoint with an associated image and press the left mouse button. The image will be displayed. Clicking on additional Waypoints will cause their associated images to be shown. Clicking on the same Waypoint again will hide the image display. When the image is shown, the caption of the marker is superim-



Using TrackRanger with Natmap Digital (ECW) maps (refer also Copying Natmaps Section on Pg 10)

The user should first familiarise themselves with the operation of the Natmap Digital Viewer Map Reading program, and the associated controls and tools. Most of these options are also available from within TrackRanger.

Note that most Hot-Key commands associated with Natmap maps begin with E. This is derived from the file type of ECW (Enhanced Compressed Wavelet format)

Naming the ECW files directory:

TrackRanger will attempt to automatically find the location of the Natmap Raster maps whenever the user attempts to load one of these maps. If TrackRanger cannot locate the maps, it will prompt the user to search for the 250k.ECW files.

If Natmap maps are copied to the hard disk drive, please run the Natmaps Raster Viewer program first, before starting TrackRanger. This will ensure that the file locations are prepared for TrackRanger, and save the user having to manually search for them.

Raster & UBD Street Map Loading options:

There are two different map-loading options:

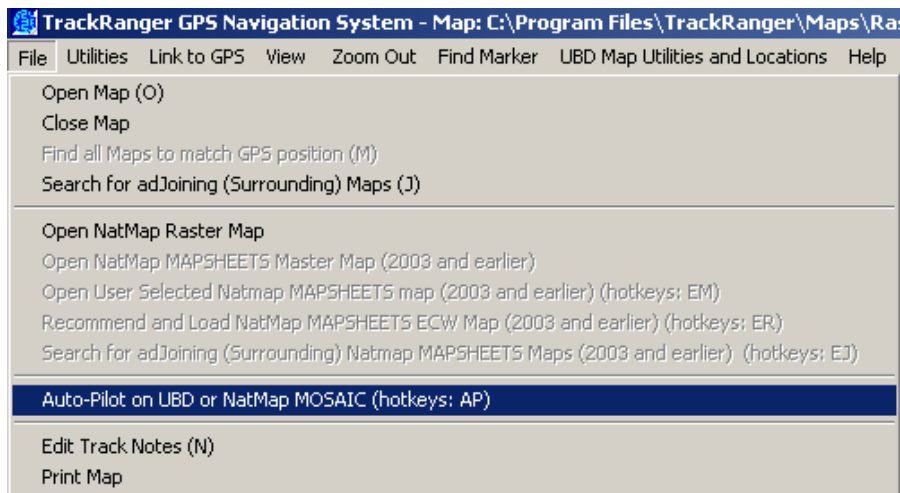
Tip: When an ECW (e.g. Natmap Digital Maps) map has been loaded, and is ready for internal use by TrackRanger, the small Tick button may also be pressed to load the current ECW view into TrackRanger. (**Note: Hot-Keys may not work in mode**)



Option 1: Natmap Digital/Mosaic & UBD:

TrackRanger supports Auto-Pilot with Natmap Raster and UBD Street Directory maps. Just press **L** to Link to the GPS, and then use the hot-keys **AP** to turn on **Auto-Pilot**. TrackRanger will find and load the associated map, continue to Auto-recommend and Load further maps, and enable Auto-Map-Move all in one operation.

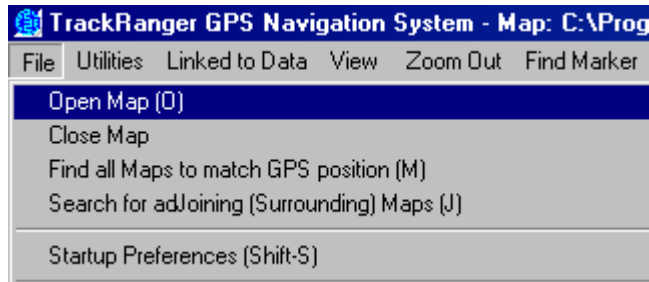
(note: refer to GPS NMEA communications setup on page 21)



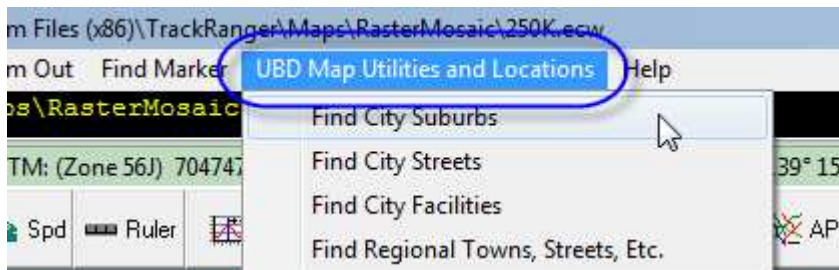
After loading, Press hot keys X1—X8 to change the zoom when navigating with GPS data (X9 for User defined Zoom—set from utilities menu)

Option 2: Load any map:

To open any map, select the Open Map from the Files drop down menu. (Hot-key O)



Note that manual loading of the UBD Maps is undertaken from the UBD map utilities drop-down menu (see page 25 for more information).

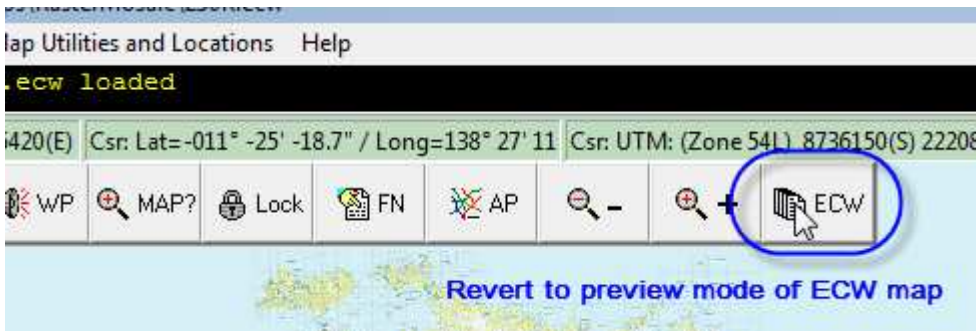
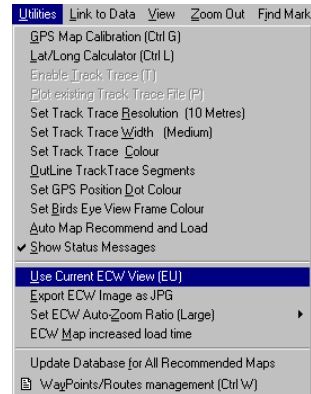


Manually load UBD maps from the drop-down menu (City Streets or Regional Towns)

Using the ECW map:

Note that for options 1 & 2, TrackRanger will allow the loaded ECW map to be used for normal positioning purposes, but the map load must be finalised before other TrackRanger functions, such as distance measurement, marker positioning, Waypoints etc can be used.

If these additional features are required, once the desired ECW map has been loaded, simply press the Red Tick. This will then finalise the import of the map so that other features are available.



Revert back to preview mode with the far-right button on the mini toolbar:



Installing Natmap Digital maps to the Hard Drive

Important!!!! Skip this section if you have received Natmap 250k as part of the TrackRanger package deal—no install is necessary, just copy the maps as shown below in the section: “Copying Natmap from DVD/USB to hard drive”

If Natmaps is not already installed, install Natmaps by clicking on SETUP.exe from the top-level directory on DVD Disc 1. Refer to inside front cover of Natmaps CD case. Make sure TrackRanger has been fully installed before commencing this copy procedure. **(Tip: When installing the actual Natmaps product, we recommend that you use the TYPICAL install option)**

Copying Natmap from DVD/USB to hard drive

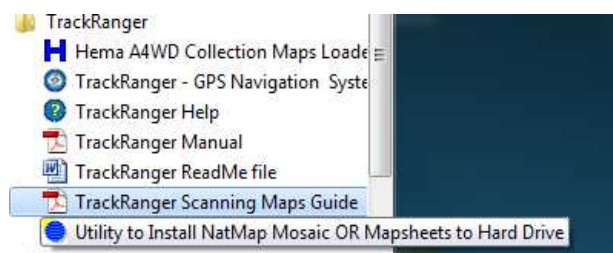
TrackRanger supplies an automatic utility to copy the map files. To use, do either of the following:

A: Run **Setup.exe directly** from the Natmap Digital DVD disk.



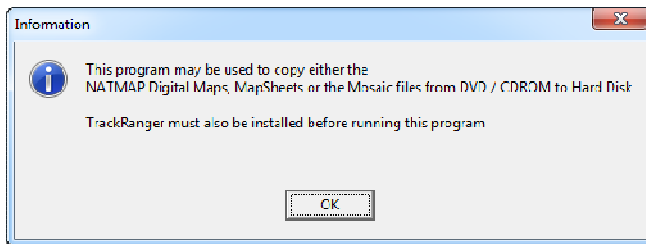
or

B: click on the **Utility to Install Natmaps To HDD program** icon from **Windows Start > Programs > TrackRanger**.

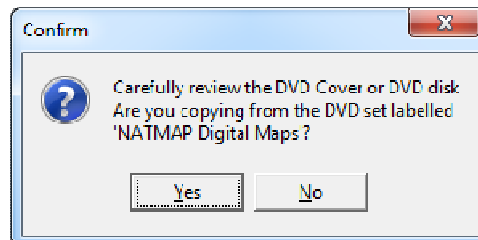


The steps to follow are described below. You may also follow the on screen instructions that are presented by the program.

For Natmaps Digital Insert Disc 1 into the CDROM / DVD Drive (or insert USB drive if products purchased on USB)

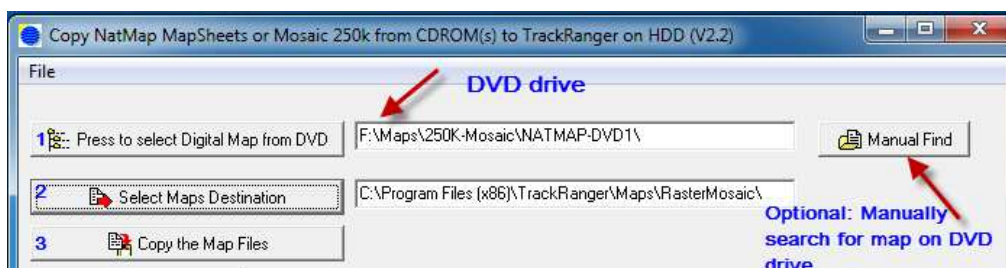


Answer the question on the map type you are copying from (**Digital Maps, MOSAIC Premium, Standard, MAP-SHEETS** etc)



(Tip: Please also review Manual Find option on page 12)

Follow the prompts of the program depending on the product you are installing (tip: select 'NATMAP Digital Maps' for distributions supplied on USB removable drives).



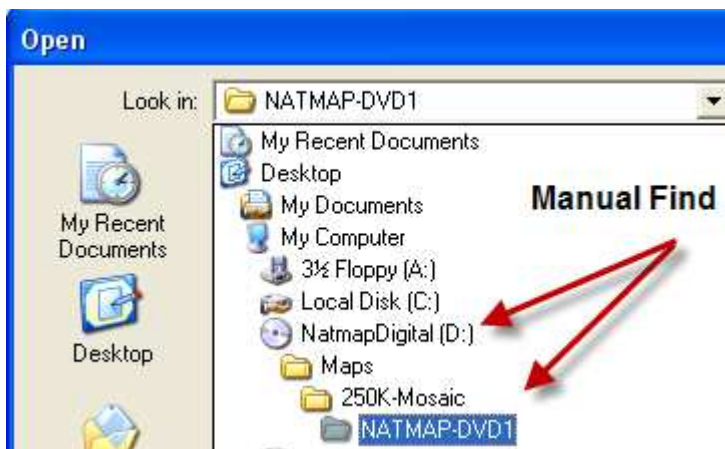
The program will automatically select the location of the file **250k.ecw** (if installing from a USB flash drive, refer to information on page 12, using the Manual Install method)

Press the "Select Maps Destination" button. *We recommend that you use the defaults as selected by the program for your computer.*

You may also press the Manual Find button if necessary and navigate to this location on the DVD or USB drive (optional purchase).

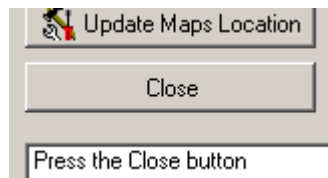


You need to locate the file '**250k.ecw**' in a sub-folder of the Natmap Disk



Press the Copy the Map Files button.

Wait until the 250k.ecw Map has been copied from the DVD / USB Drive. This will take several minutes.



Press Close.

Note: If you have Natmap Digital 2008 or Natmap Raster Premium, DVD-2 is not required for TrackRanger operation.

Your Maps are now available from your hard disk drive, and all related updates have been made to the computer.

Installing Products from the USB removable drive (optional purchase)

TrackRanger: Open the **TrackRanger** folder on the USB drive. Double-click on **Setup.exe**. Allow the program to run if requested to confirm. Use the default recommended settings.

UBD: Installing UBD City streets from the USB drive: Open the **UBDCityStreets** or **UBDRegionalCitiesAndTowns** folder and double-click on the **SETUP.exe** file. Allow the program to run if requested to confirm. Only use the default locations as recommended by the program. TrackRanger will find and use the UBD product after the next restart.

Natmap: Refer Page 10 'Copying Natmap from DVD/USB to hard drive'

Erratic Mouse Move Problems with GPS units

If, after starting your computer with the GPS connected, the mouse cursor movements are erratic / uncontrollable, please restart the computer with the GPS disconnected / switched off. This problem occurs because if the computer is started while the GPS is connected (regardless of TrackRanger operation), the operating system incorrectly detects the incoming GPS messages as mouse movements, and assigns the mouse drivers to the communications port. Incoming GPS message packets are incorrectly interpreted as mouse movements, resulting in erratic screen mouse position data. Starting / connecting the GPS after the operating system has completely started overcomes this problem. **Please note:** this is not a TrackRanger problem. It occurs before TrackRanger is started. It is a result of incorrect interpretation by the Windows Operating System of the received GPS data as mouse movement commands.

Advanced features: User supplied maps:

Map Calibration of User Supplied (scanned) Maps

Although TrackRanger works with pre-calibrated maps, some users have their own paper maps that they may import into TrackRanger after scanning on a PC scanner. This feature is particularly useful for gold prospector's own favorite maps, etc.

(Tip: TrackRanger version 3.2 or later can automatically read ECW format maps direct from disk (e.g. Natmap Maps). These maps are already calibrated. The following section is only provided to assist users who wish to calibrate their own scanned maps (i.e. not Natmap).)

TrackRanger also comes with a demonstration map that has not been calibrated. This allows the user to practice using TrackRanger's powerful tools to calibrate the map.

Press the keyboard 'O' key to open any map. Navigate to the file named TrackRangerUserSetupMap_HighRes.jpg

(Note, a low-resolution version is also available for systems with lower resources, less memory, lower CPU power etc. If you have difficulty loading the HighRes image on your system, please use the TrackRangerUserSetupMap_LowRes.jpg image instead).

Open this map. Notice that the message 'Map Not Calibrated' is presented in the Map Display data section of the GPS coordinates window (hot key G).

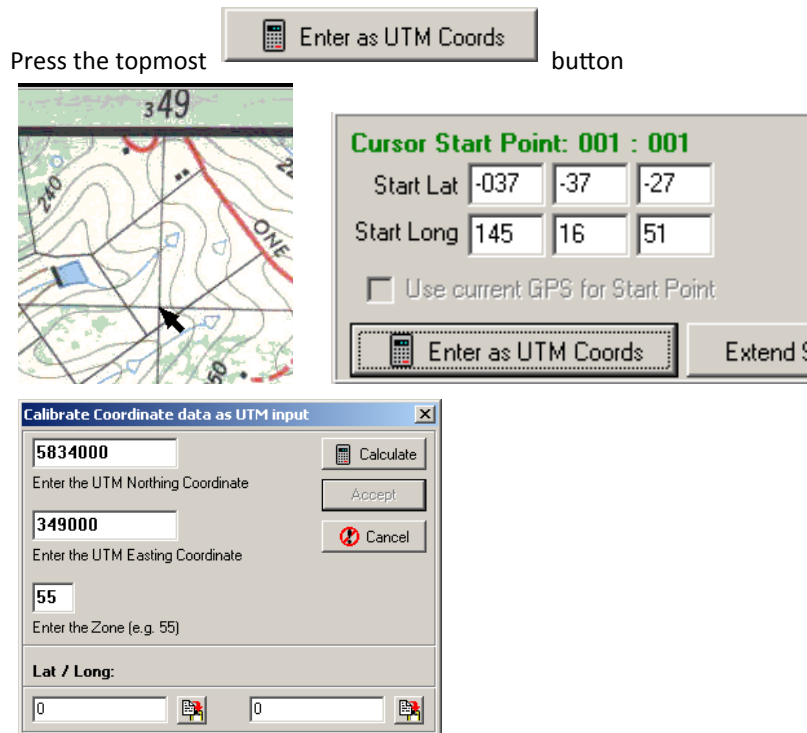
TrackRanger will also advise the user that a new calibration file will be created for this map, with a message similar to the following:



Calibrating the map involves the following easy steps:


1. Position the mouse over a known location near the upper left hand corner of the map (e.g. a grid line intersection).
2. Press and hold the <Ctrl> key on the keyboard, and press the **Left Mouse Button**.


If the mouse was not within the map surface, the Cursor Start Point would be shown in **Red**. In this case, simply press cancel, and repeat from step 1 again.

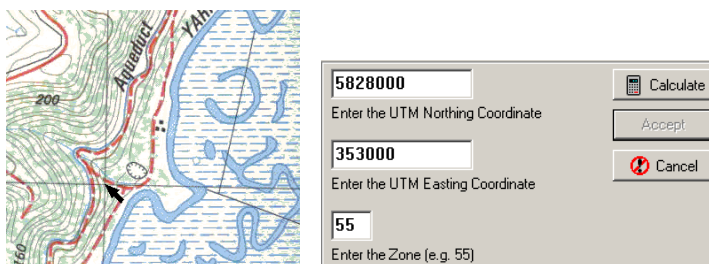



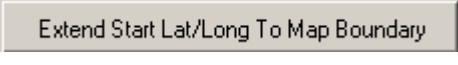
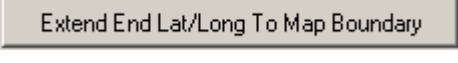
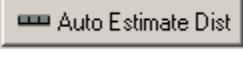
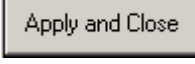
If the value is in UTM coordinates, press the Enter as UTM Coords button and enter the Northing/Easting and map zone. **For the sample map, enter the UTM values shown above.**

3. Click on Calculate and then Accept.

4. Press the  button.
 (You may ignore any Horizontal Distance warning messages at this stage, or information relating to ruler calibration) This data is input in step 10.
5. Now, move the mouse to the lower right-hand corner of the map (use the scroll bars or arrow keys on the keyboard to move the map) and with the mouse in the position as shown below, hold down the <Alt> key, press the left mouse button. (**Note:** this is NOT the Control key, but the **ALT** key!). The Lat Long and Distance data form is again presented.

6. Press the lower  button, enter the following values, then press the Calculate and Accept buttons.



7. Press the  button
8. Press the  button
9. Press the  button
10. Press the  button
11. Press the  button, and the map is now calibrated.

Notice that the Latitude and Longitude scales are now automatically drawn alongside the map.

Note: You may need to select an alternative World Geodetic System (WGS) for other maps. Check the map legend to find out which WGS the map conforms to. This is required for the UTM coordinates only.

Press the <Esc> key to reload the GPS data. The GPS position is now drawn on the calibrated map surface.

Press the 'M' (Map recommendation) key, and notice that the newly calibrated map is now provided in the list of maps!

Press AM to enable Auto Map move

A series of scanned map 'frames' scanned from a larger map may also be easily calibrated using the Quick Lat/Long Calculator. See the TrackRanger manual and the online help for more details.

Scanning a map

The following guidelines are presented as recommendations for the preferred resolution and sizes etc for scanning of maps:

If your scanner software supports these features, set as follows, or at least as close as possible:

Resolution:

100 dpi or greater (200dpi recommended for high res.)

Document type: Photo quality (Photo Quality 24 bits)

Scale: 100%

Scan Mode: Color

Auto Density

Scan the information, and save as a JPG (preferred), PNG or BMP file. Tip: When scanning multiple frames from a larger map, give each frame a suitable name to identify it e.g. MyMap1_a.jpg, MyMap1_b.jpg etc

Once the map has been created, it should be saved to the TrackRanger Maps directory (usually C:\Program Files\TrackRanger\Maps\) on the TrackRanger computer system. Alternatively, it may be written to a CD-ROM, as a part of a user defined library of maps for use by the TrackRanger system.

Determine the start and end Lat/Long coordinates of the map image, then load the image into TrackRanger (hot key 'O' to open map dialog), and calibrate the map as per the details in section 3 of this guide.

For more information, please refer to the section "Setting up a map" in the TrackRanger_Manual.pdf, and also the TrackRanger Scanning Maps Guide.pdf files, both of which are available from the Windows Start | Programs | TrackRanger menu on your Notebook computer

Zoom out using the keyboard Z key, or from the pop-up menu supplied by clicking the right mouse button while the mouse cursor is positioned over the map.

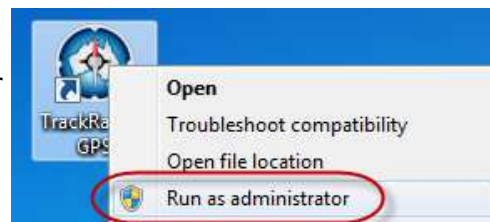
Note that you must zoom out before zooming in on a different location of the map.

Gazetteer Place Name Search: Press <Alt>G or select Gazetteer from the View drop-down menu. Enter one or more letters describing the location, press Search, double-click any item to add as a Waypoint. Use filter by Search Type and Location (state) if required. Sort results by clicking on the column heading.

Error Messages:

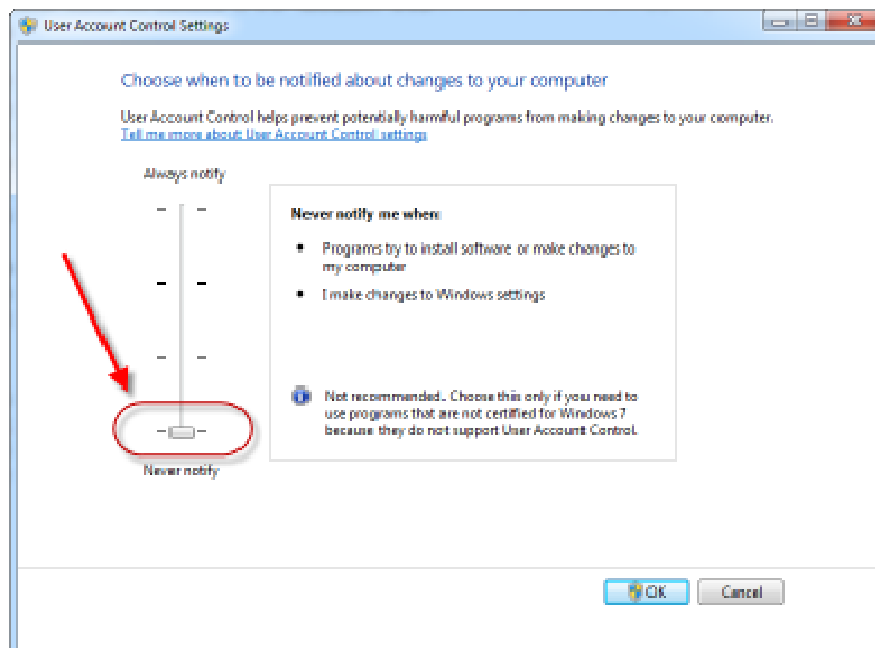
TrackRanger may give an **'Unable to show Toolbar'** or other error message when opening an ECW (e.g. Natmap) map, or advises that a Waypoint file is invalid, or does not store the registration correctly etc. This can occur if TrackRanger is not running with correct privileges. Vista and Windows 7 can cause this if User Authorisation Control (UAC) is set too high. There are two known ways to overcome:

- 1: Right-click on TrackRanger and select:
Run As Administrator



or

- 2: Change UAC control settings from:
Windows > Control Panel > System and Security > Action Center



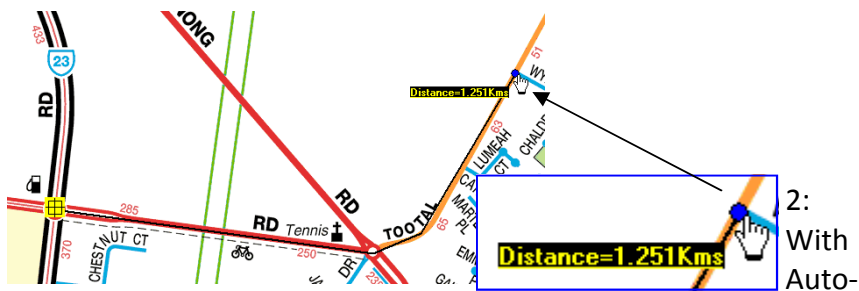
Measure a Distance

There are several ways to measure distances with TrackRanger.

1: Right-click on the map and select Set Distance origin. Move around the road network, left-clicking at each junction.

The accumulated distance is displayed.

Right-click to end the sequence



Map Move disabled, move the mouse to a position on the map, press and hold the left <Shift> key, and left-click and move the mouse to follow a road contour. Release the mouse button and view the contour and straight-line distances.



3: Control-D can also be used to assist with 'accumulating' a distance from multiple single distance measurements. See the Help file for more information

TrackRanger Manual

The TrackRanger online manual is available from the Windows Start Menu > Programs > TrackRanger start menu item. Extensive online help is also available from the Help menu from within TrackRanger.

GPS communications

Before TrackRanger can be used with a GPS unit, the communications must be set to match the data being sent from the GPS unit. This is quite a straightforward process.

From the Satellite display (View Menu or hot-key Control-S), select the “GPS Comms” tab, and set up the values to match your GPS. Generally, the values as shown to the right will be correct except for COM port number. You can automatically detect the COM number by pressing the button shown. **(You MUST have the GPS drivers loaded and the GPS connected first before Auto-detect will work)**

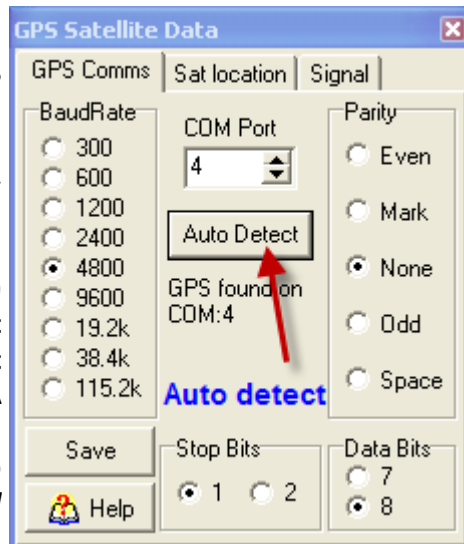
Refer to the documentation that came with your GPS for determining the COM port number. Press ‘L’ to Link to the GPS unit.

The status of GPS communications is always available from the status window on the GPS coordinates form (hot-key G).

On your GPS, (SETUP | INTERFACE menu) the Interface should be NMEA (highest revision available). TrackRanger will not be able to receive data unless the NMEA interface is selected on your GPS unit.

The datum should be WGS84 for NatMap maps. (These settings are not required for the TrackRanger supplied GPS)

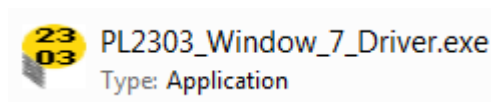
(Note that Link command on the Demo version Links to the sample GPS data instead.)



Windows 7 GPS Driver: A copy of this driver is included on the TrackRanger CD. *Unplug the GPS.*

Insert the TrackRanger distribution CD, Cancel Install if it tries to run, Using Computer, navigate to and open the **Windows7_TrackRanger_GPSDriver** folder on the CD/DVD drive.

Launch the PL2303_Window_7_Driver program:



Registration of Software

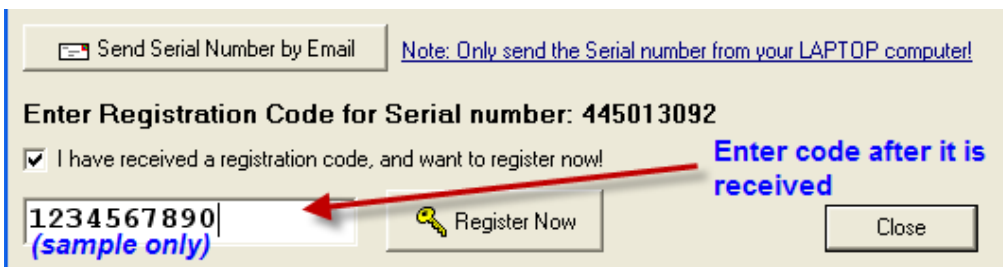
TrackRanger software must be registered to continue to run as a full GPS capable version. TrackRanger will work on any compatible PC, but some GPS functionality is limited after an initial period until the software is registered on the (notebook) computer that TrackRanger will ultimately operate on.

The licence allows you to only register TrackRanger on one computer. With the software installed on the desired computer system (usually a notebook or other portable PC), select Help | Register TrackRanger from the main menu bar.

Copy the details provided, together with name and address information, and post to Advantech Design. Alternatively, you can send the details by email to trackranger@advantechdesign.com.au

If your laptop has email access, just press the “Send Serial Number by Email” button

You will shortly receive a registration code by return mail / email. To install the registration, click on Help | Register TrackRanger, and enter the registration number provided.



The screenshot shows a registration dialog box with a light beige background and a blue border. At the top left, there is a button labeled "Send Serial Number by Email" with a small envelope icon. To its right is a note: "Note: Only send the Serial number from your LAPTOP computer!". Below this, the text reads "Enter Registration Code for Serial number: 445013092". There is a checked checkbox with the text "I have received a registration code, and want to register now!". To the right of the checkbox, the text "Enter code after it is received" is displayed in blue. Below the checkbox is a text input field containing the sample code "1234567890" in blue, with "(sample only)" written below it. A red arrow points from the "Enter code after it is received" text to the input field. To the right of the input field is a button with a key icon and the text "Register Now". Further to the right is a "Close" button.

Full details of the installation procedure are provided with the returned registration number. Registering ensures that all of the features of the TrackRanger software remain fully operational.

Track Trace (recording you travelled path)

- * Press the <Esc> key to reload the GPS data.
- * Press M to find a map if required, and reload.
- * Press A M to turn on Auto-Map Move if desired.
- * With a GPS position on screen, press the T key to start Track-Trace. TrackRanger will provide you with a recommended name to use for this individual Track Trace. Watch as TrackRanger records the journey.
- * Experiment with Track Trace colours, TrackTrace resolution etc from the Utilities menu.
- * Press the T key again to disable TrackTrace.
- * After a Track Trace has been recorded to disk, press the P key to select and load in a TrackTrace file and plot the TrackTrace directly to the map surface (these options are also all available from the Utilities menu)
- * Note that Track Trace and plots are influenced by Datum Shift—see the TrackRanger manual sections 12 and 19 for more detail.

Waypoint Management functions

See TrackRanger Help for setting the GPS communications protocol to suit Waypoints if you are uploading/downloading from a GPS. (Tip: Some GPS units require the NMEA output to be switched off prior to uploading/downloading Waypoint data.)

1. From the main screen, press Control-W (or select Waypoints/Routes management from the View drop-down menu).
2. Press the “Load Waypoints from file” button, and select and open the .WPT file.



Check the Show Waypoints / Routes on map checkbox. TrackRanger will give Voice alerts if ‘Alert as Approach WP’s is checked. See Sections 7 & 8 of the TrackRanger Manual

Click on OK, and notice that the Waypoints and route markers are now displayed on the map surface (you may need to scroll the map with the arrow keys to view the points data). Move the mouse over one of the points, and the name, Lat/Long and comment is displayed.

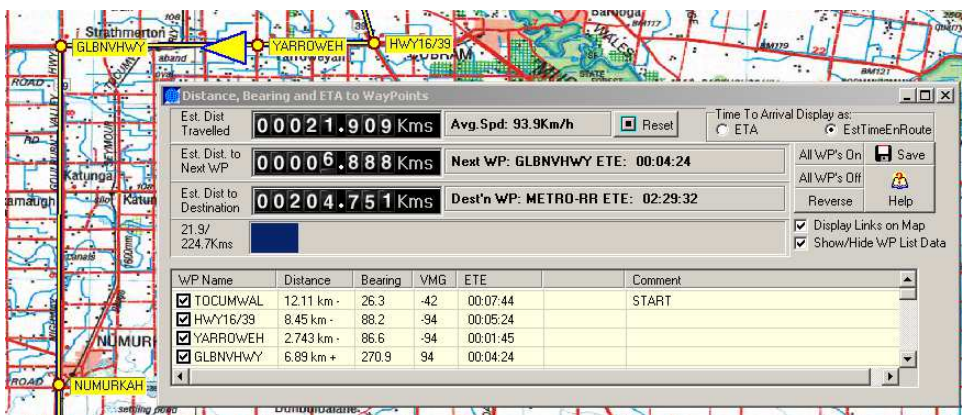
Press the space bar and notice that all of the names are displayed simultaneously.

Waypoints and routes may be up/down loaded from most GPS units. This allows you to create and save any number of Waypoints, and load them back to your GPS when required. Some GPS units require that NMEA be switched off to upload/download Waypoints. Refer to your GPS user documentation for information on changing communication protocols.

Photos or Movies can be added to Waypoints by right-clicking the Waypoint!

When Waypoints are loaded, Distances and ETA's to Waypoints may be displayed by pressing the hot-Key 'D'.

Refer to section 7 & 8 of the TrackRanger manual for more details.



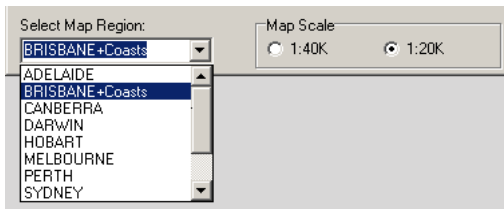
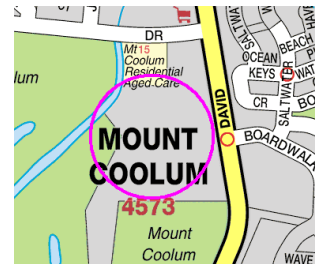
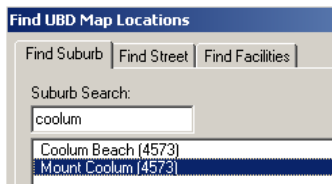
UBD Maps:

UBD maps will autoload with the AP (AutoPilot) hot-key command. Search for Streets, Suburbs or Facilities directly from the UBD drop-down menu at the top of the TrackRanger screen.

For full detailed information, see Section 27 of the TrackRanger Manual (pdf file).

*Note: If you have installed **UBD Australian Regional Cities and Towns V3.0** or later, you must initially select Update Database from the TrackRanger Utilities drop-down menu so that TrackRanger can learn about these maps.*

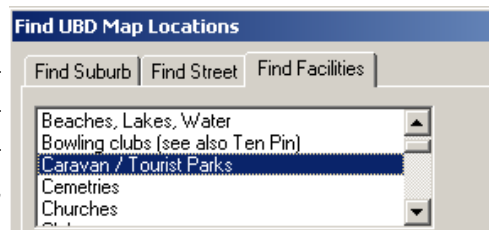
Selecting Map Region Choose the desired map region from the drop-down list at the bottom of the UBD maps page:



Select the Suburb and double-click to load:

Finding Facilities

Scroll through the list of available facilities for that map region, and double-click to select the desired facility type, double click to load:



Tip: When UBD Capital Cities map loaded, use keyboard Shift + Arrow keys to zoom to an adjacent map region (not for Regional Towns maps)

Tip: The keyboard 'U' key toggles between 1:20K and 1:40K UBD maps on the Capital Cities maps.

TrackRanger Hot Key Summary:

Please note: the Hot-Keys do not work with Natmap maps when they are in manual Preview mode. Use the commands from the drop down menus when in this mode (i.e. with this toolbar showing)



A2-A5	Auto-Track Zoom magnification 2X-5X (see also X1, X2, X3) (use X1-X7 for NatMaps, UBD etc)
AA-AC	Auto-Arrow or Auto-Circle for GPS position
AD	Auto-Track Disable (for user scanned maps)
AL	Auto-show Waypoint Links (trip planning)
AM	Auto Map Move to follow GPS pos'n
<u>AP</u> *	Auto Pilot (toggle), for NatMap/UBD maps (Link first)
AR	Auto-Recommend and Load maps (match maps for current pos'n)
AW	Alert when approaching Waypoints
B	Birds-Eye View Display
C	Compass Display
D	Distances and ETA's to Waypoints
Ctrl-D	Distance additional measurement (Toggle)
EJ	Search for an Adjoining NatMap MapSheets map (see also J) (suitable only for older MapSheets)
EL	Lock TrackRanger to only use current ECW map (e.g. Australia's Outback Tracks)
EP	Go back to Preview mode of the current ECW map
ER	Auto Recommend and load NatMap MapSheets or currently loaded Locked Map
EU	Use current ECW map view
FN	Force only NatMap (or UBD map) (toggle) (select AutoPilot first)
G	GPS information display
<Alt>G	Gazetteer Place Name Search
Ctrl-G	Manually open Map GPS calibration dialog (for user scanned maps)
H	Show Hot Keys (this command);
I	Information Statistics
J	Search for Adjoining maps. See also EJ (suitable for only for older Map Sheets products)
<u>L</u>	Link (Listen) to GPS (connect) - see also: <Esc>
Ctrl-L	Launch the Quick Lat/Long Calculator

M	Map Recommendation for current GPS position
N	Notepad for recording trip notes
O	Open Map dialog (any map)
P	Plot TrackTrace position information from existing file (Recorded first by using TrackTrace) (toggle)
Ctrl-P	Plot additional TrackTrace data (after first plot has been drawn) - 3 plots max
R	View Ruler Scale display
Ctrl-R	Record a GPS Log File to disk (use Shift-Escape to play it back)
S	View Speedometer display
Shift-S	Startup preferences, Waypoint, TrackTrace, Plotting etc.
Ctrl-S	View Satellite information
T	Track Trace Position Information + Logging
Ctrl-T	Track Plan record a TrackTrace on the screen with the mouse
U	Use alternative 1:20k / 1:40k UBD maps (toggle)
V	Night Vision (2 levels or Off) - Requires W2K or XP or later
W	Waypoint Display for loaded Waypoints
Ctrl-W	Open Waypoint management dialog
X1-X7	Zoom ECW Maps
X9	Zoom ECW to User Defined Value (set from Utilities menu)
Z	Zoom 100% or force map refresh.
<Space>	Show ID's (names) for all Waypoint and Route positions
+ or =	Add current GPS location as a Waypoint (= is instant)
<Backspace>	Show Travel Statistics (Large Screen)
Keyboard Arrow Keys	Scroll Map View on Screen (if Auto Map Move off)
Shift + PageUp/PageDown:	Zoom In / Out
Shift + ArrowKeys:	Navigate around map surface (useful for adjacent UBD area)
Shift + Left Mouse Button:	Measure Distances using the mouse
Shift + Right Mouse Button:	Measure Area (polygonal)
Shift + Left-Click on a Waypoint:	Zoom-In to Waypoint
Shift + <Alt> + Left-Click on a Waypoint:	Zoom-Out from Waypoint
F12-F5	Recall a previous view extent of an ECW map (F12 is latest)
<Esc>	Link to internal Demo GPS Data
Shift-<Esc>	Allows Alternate GPS log file to be loaded (see Control-R)
','	(Comma) Pause reading of internal Demo GPS Data
Shift-Q	Stop reading Internal GPS recorded data
	(* Auto-Pilot for use with Natmap Raster or UBD street maps)
	Tip: Most commonly used keys are 'L' (Link) and 'AP' (Auto-Pilot)
	Seldom used keys are grayed out

Uninstalling TrackRanger

Only use Windows Control Panel > Add / Remove Programs to uninstall TrackRanger.

Index

Installing TrackRanger	1
TrackRanger operation overview	2
Installing Natmap on Windows Vista	2
Add Photos or Video Clips to Waypoints.....	5
Showing the Photo Image	5
Using TrackRanger with Natmap Raster Maps.....	6
ECW Map Loading options	7
Using the ECW map	9
Installing Natmap Maps to the Hard Disk Drive	10
Installing products from the USB removable drive	13
Erratic Mouse Move Problems with GPS units.....	13
Map Calibration of User Supplied (scanned) Maps.....	14
Scanning a map (advanced features)	17
Gazetteer—Place Name Search.....	19
Error Messages	19
Measure a Distance	20
TrackRanger Manual.....	20
GPS communications.....	21
Registration of Software.....	22
Track Trace.....	23
Waypoint / Distance Management functions	23
UBD Maps	25
TrackRanger Hot Key Functions.....	26
Uninstalling TrackRanger.....	28

Installation / Operation Support inquiries should be sent to
trackranger@advantechdesign.com.au